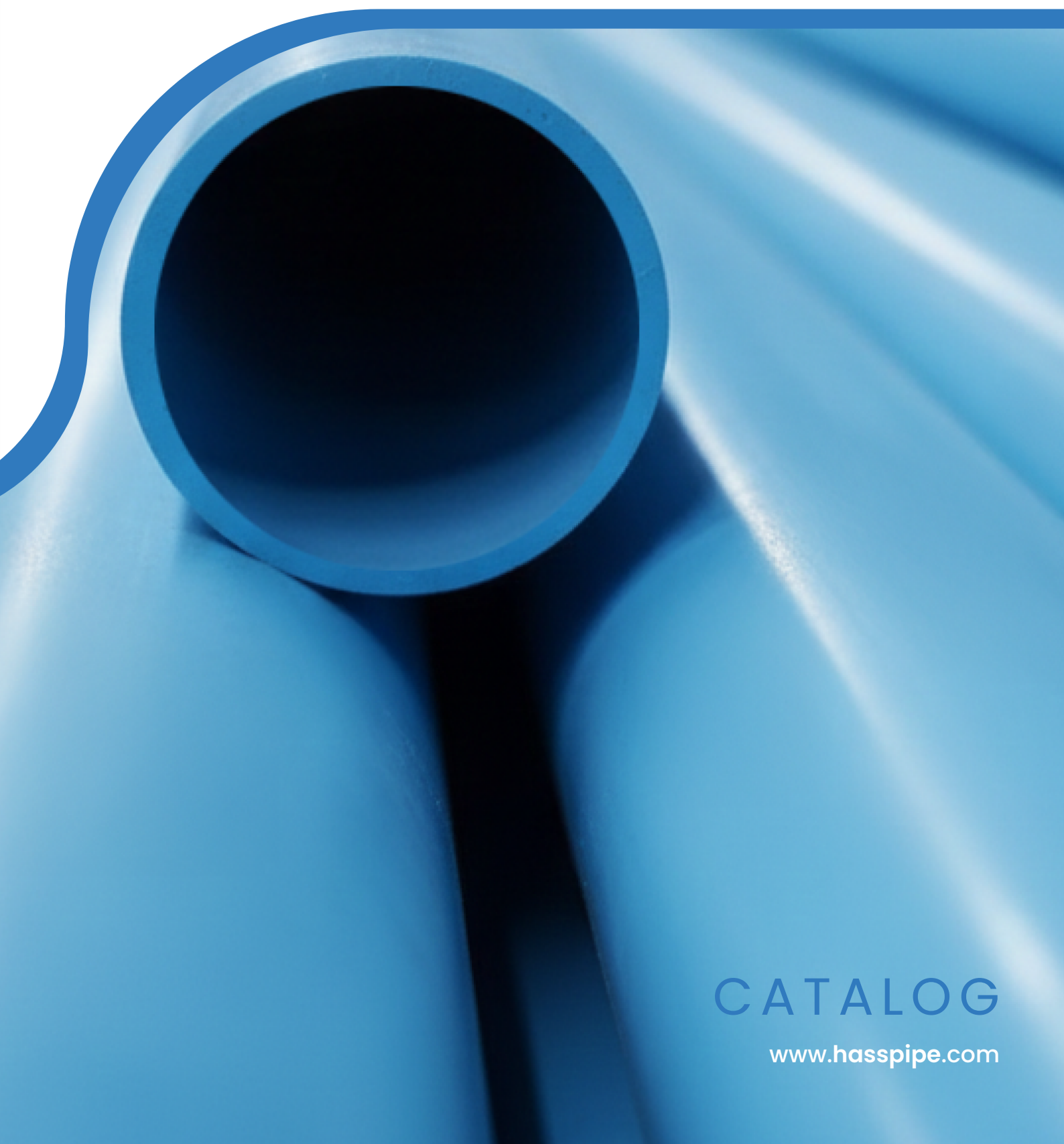


The logo consists of a stylized globe icon made of horizontal and vertical lines, followed by the text "HASS PIPE" in a bold, blue, sans-serif font.

HASS PIPE



CATALOG

www.hasspipe.com



At Hasspipe, we aim to manufacture safe, durable, and long-lasting piping systems for underground water resources. In our modern production facilities, we produce U-PVC well casings, column pipes, and solvent-cement pipes according to international standards, providing high-quality solutions for industry needs.

All our products are specially designed to ensure maximum performance under challenging conditions and undergo advanced quality control processes before reaching the market. The piping systems we develop for underground water supply, drilling applications, and industrial water systems have gained trust for their high durability, leak-proof structure, and long service life.

Our priority at Hasspipe is to provide not just pipes but reliable and sustainable water solutions. With our innovative production approach, engineering expertise, and professional team, we add value to more projects every day.

Our mission is to deliver high-performance, durable, and long-lasting pipe solutions; our vision is to be the first name that comes to mind for U-PVC well casings and column pipes in Turkey and worldwide.

Quality, reliability, and sustainability are the foundation of Hasspipe. We are here to build the water systems of the future together.



U-PVC WELL PIPES **03**

100 METERS DEPTH DRILLING PIPES FOR SHALLOW WELL APPLICATIONS **04**

300 METERS DEPTH DRILLING PIPES FOR DEEP WELL APPLICATIONS **05**

U-PVC SLOTTED SCREEN PIPES FOR EFFICIENT GROUNDWATER FILTRATION **06**

WELL PIPE ACCESSORIES **07**

U-PVC COLUMN PIPES **08**

U-PVC MEDIUM DUTY COLUMN PIPES (UP TO 150M) **09**

U-PVC STANDARD DUTY COLUMN PIPES (UP TO 200M) **10**

U-PVC HEAVY DUTY COLUMN PIPES (UP TO 270M) **11**

COLUMN PIPE FITTINGS **12**

U-PVC SOLVENT CEMENT SOCKETED PIPE **14**

U-PVC SOLVENT CEMENT SOCKETED PIPES FOR PERMANENT WELL CASING **15**

U-PVC WELL PIPES



100 METERS DEPTH DRILLING PIPES FOR SHALLOW WELL APPLICATIONS

Hasspipe 100 meters depth drilling pipes are specifically engineered to provide safe, durable, and efficient performance in shallow and medium-depth groundwater applications. These lightweight U-PVC pipes serve as a modern, high-strength alternative to traditional materials, offering superior resistance to environmental factors and corrosion.

Optimized Solutions for Irrigation and Domestic Boreholes

Designed for wells up to 100 meters, our shallow well drilling pipes are widely preferred in irrigation and domestic projects due to their high strength-to-weight ratio. As an easy install drilling pipe solution, they significantly reduce labor time and operational costs on the field.

Key advantages of the 100m Series include:

- System Compatibility:

Fully compatible with screen pipes for a seamless integrated casing and filtration system.

- Reliability:

Precision-machined trapezoidal threads ensure secure, leak-free connections and proper alignment during pump installation.

- Quality Standards:

Manufactured in strict compliance with TS 11794 and ISO 9001 quality management systems.

Economical and High-Performance Well Construction

For projects where speed and cost-efficiency are critical, Hasspipe 100m U-PVC casing offers an economical well casing solution without compromising on quality. These pipes ensure uniform gravel packing and long-term stability for all your domestic borehole pipes needs.

100 METERS DEPTH
DRILLING PIPES



Pipe Diameter		Theoretical Pipe Thickness mm	Theoretical Pipe Weight kg/mt.
mm	inch		
Ø113	4"	4,75	2,489
Ø125	4 1/2"	5	2,904
Ø140	5"	5,9	3,831
Ø160	5 1/2"	6,8	5,043
Ø175	6"	7	5,692
Ø200	7 1/2"	8	7,435
Ø225	8"	8,9	9,309
Ø250	9"	10	11,617
Ø280	10"	11,3	14,697
Ø330	12"	13,40	19,90

Results are proportional estimates based on the given reference weight; actual values may vary slightly due to production tolerances, density differences, or inner/outer diameter variations.

300 METERS DEPTH DRILLING PIPES FOR DEEP WELL APPLICATIONS

Hasspipe 300 meters depth drilling pipes are specifically designed to meet the demanding requirements of high-pressure and deep groundwater extraction projects. Engineered for maximum stability, these U-PVC deep drilling pipes provide a superior, rust-proof alternative to steel for deep-seated water well infrastructures.

Engineered for High-Collapse Resistance and Deep Extraction

U-PVC pipes suitable for depths up to 300 meters must withstand significant external pressure. Our high-collapse resistance pipes are manufactured with increased wall thickness to ensure long-term performance in industrial borehole casing applications.

Why choose the 300m Series for deep projects?

- *Advanced Strength:*

High mechanical strength tailored for 300m deep well construction.

- *Integrated System:*

Full compatibility with screen pipes ensures an efficient groundwater drilling system with optimized filtration.

- *Precision Threading:*

Trapezoidal threads provide secure, leak-free connections, ensuring accurate alignment even at extreme depths.

- *Quality Assured:*

Fully compliant with TS 11794 and monitored under the ISO 9001 quality management system.

Reliable Performance in Demanding Geological Conditions

For large-scale and industrial extraction, Hasspipe extra thick wall PVC pipes provide the durability needed for high-pressure environments. Combined with our precision engineering, these screen pipe compatible drilling pipes offer the most reliable solution for deep well integrity and efficient water flow.

300 METERS DEPTH DRILLING PIPES



Pipe Diameter		Theoretical Pipe Thickness mm	Theoretical Pipe Weight kg/mt.
mm	inch		
Ø113	4"	5,7	2,961
Ø125	4 1/2"	6,2	3,565
Ø140	5"	7	4,506
Ø160	5 1/2"	8,3	6,095
Ø175	6"	8,8	7,079
Ø200	7 1/2"	10,3	9,458
Ø225	8"	11,4	11,787
Ø250	9"	12,6	14,479
Ø280	10"	14,4	18,513
Ø330	12"	17,90	25,90

Results are proportional estimates based on the given reference weight; actual values may vary slightly due to production tolerances, density differences, or inner/outer diameter variations.

U-PVC SLOTTED SCREEN PIPES FOR EFFICIENT GROUNDWATER FILTRATION

Hasspipe U-PVC slotted screen pipes are precision-engineered to provide superior groundwater filtration in deep well and water extraction projects. These pipes are the heart of a successful borehole, designed to maximize water intake while maintaining structural integrity in diverse soil conditions.

Advanced Sand Control and Optimal Water Flow

Our PVC well screen pipes are essential for preventing sand and fine particles from entering the well string, which protects your pump and extends the life of the borehole.

Hasspipe screens feature precisely machined slots that ensure:

- *Optimal Filtration:*
- *High-performance sand control well screens that balance water inflow with sediment exclusion.*
- *System Integration:*

A screen pipe compatible casing system that works seamlessly with our 100m and 300m Plain pipe series.

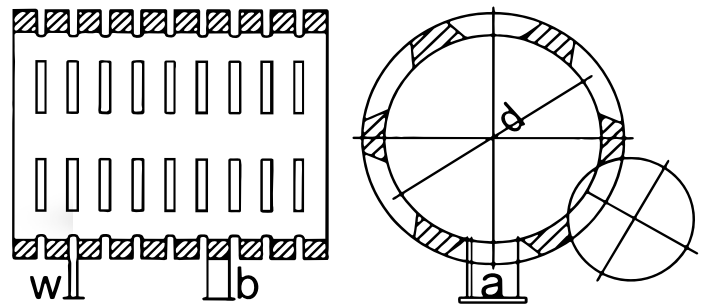
High mechanical strength and corrosion resistance, offering a lightweight yet superior alternative to traditional metal screens.

Manufactured with precision slotted intake pipes that follow strict TS 11794 and ISO 9001 standards.

Reliable Performance Across Diverse Geological Formations

Whether used in shallow irrigation or deep industrial boreholes, Hasspipe borehole filter pipes provide long-term stability and easy installation. By combining our perforated PVC well pipes with our high-quality casing solutions, you ensure a stable, efficient, and clog-free water extraction system for decades to come.

SCREEN PIPES



Slot Width mm	Description	Recommender Gravel Pack Size
0,5 mm	Fine filtration	1-2 mm gravel
0,75 mm	Standart filtration	2-3 mm gravel
1,00 mm	Medium filtration	3-5 mm gravel
2,00 mm	High flow filtration	Coarse gravel

"Our slotted screens are engineered according to TS 11794 standards and are available in slot widths of 0.50, 0.75, 1.00, and 2.00 mm. These transverse slots, precision-cut perpendicular to the pipe axis, are optimized to ensure maximum water inflow and ideal filtration within the well."

WELL PIPE ACCESSORIES

Well pipe accessories play a critical role in the proper assembly, installation, and long-term performance of well construction systems. Hasspipe offers a complete range of accessories designed to work seamlessly with U-PVC well casing pipes and screen pipes.

Reducers are used to connect pipes of different diameters, ensuring smooth transitions and system compatibility.

Spurs provide secure end connections and structural support within the well system. Pipe Clamps (Installation Clamps) allow safe handling, lifting, and positioning of pipes during installation, reducing the risk of damage and ensuring installer safety.

Quick-Lock Maneuvering Heads enable fast, controlled, and secure pipe handling during lowering and alignment operations in deep well drilling.

All Hasspipe accessories are manufactured in accordance with TS 11794 standards and inspected under the ISO 9001 quality management system, ensuring durability, precision, and compatibility across all well construction projects.



Spur Dimensions	
Diameter	Material
140	PE
175	PE
200	PE
225	PE
280	PE

Spurs (Bottoom Caps)

This critical component, used at the very bottom of the well string, seals the end of the casing pipe to prevent sediment, sand, or mud from entering the system from the bottom.

Key Function:

Provides a secure seal at the bottom of the well.

Design:

Tapered (conical) shape for easy insertion into the borehole.

Material:

High-quality U-PVC, impact-resistant and non-corrosive.



Reduction Sizes		
D1 mm	D2 mm	Material
175	140	PE
200	175	PE
225	200	PE
280	225	PE

Reducers (Well Casing Reducers)

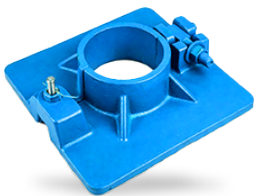
Used when a transition between two different pipe diameters is required within the same well. It provides a leak-proof and structurally sound connection between large and small diameter pipes.

Key Function:

Offers a seamless transition between different pipe sizes.

Connection:

Features a standard trapezoidal thread system 100% compatible with HASSPIPE systems.



Pipe Clamp Dimensions	
Diameter	Material
140	Iron
175	Iron
200	Iron
225	Iron
250	Iron
280	Iron

Pipe Installation Clamp

A heavy-duty equipment designed to securely hold the pipe string at the wellhead during installation or maintenance. It prevents pipes from slipping into the well while adding new sections.

Key Function:

Safely carries the weight of the entire pipe column during installation.

Material:

Manufactured from high-strength cast iron or steel.

Connection:

Available in various sizes to match different pipe diameters.



Maneuvering Head Dimensions	
Diameter	Material
140	Iron
175	Iron
200	Iron
225	Iron
280	Iron

Quick - Lock Maneuvering Head

A specialized apparatus used to lower or lift the pipe string into the well. Its rapid attachment mechanism at the top of the pipe allows cranes or hoists to transport pipes safely.

Key Function:

Facilitates the vertical lowering or removal of pipes.

Connection:

Features a quick-attach/detach mechanism to save time during installation.

 HASS PIPE

U-PVC COLUMN PIPES



U-PVC MEDIUM DUTY COLUMN PIPES (UP TO 150M)

Hasspipe U-PVC Medium Duty column pipes are specifically engineered for well installations up to 150 meters. Designed to provide a high-performance yet economic well riser pipe solution, this series is ideal for projects that require reliable water transmission without the need for high-depth reinforcement.

Optimized Strength for 150m Depth Applications

Our 150m well column pipes serve as the perfect entry-level professional solution for groundwater pumping. They are optimized for lighter to medium loads, making them the most cost-effective choice for domestic boreholes and small-scale irrigation.

Key Features of the Medium Duty Series:

- **Cost-Efficient Performance:**
High durability at a competitive price point, specifically for 150m depth pump pipes.
- **Corrosion-Free Material:**
Unlike metal alternatives, our U-PVC prevents scaling and rust, ensuring clean water and a long service life.
- **Easy Installation:**
The lightweight pipe design reduces labor time and minimizes mechanical load on wellhead equipment.
- **Precision Threading:**
Features precision-machined threads that ensure leak-proof performance and easy alignment during submersible pump installation.

Reliable Quality for Light-to-Medium Pumping Loads

Manufactured under strict ISO 9001 quality management, Hasspipe U-PVC medium duty column pipes offer a secure and stable connection for your submersible pumps. If your project requires a balance of affordability and technical reliability for depths up to 150 meters, this series is the industry's trusted choice.

When calculating pressure, what matters is not the depth at which the pipe is installed in the well, but the total manometric height the pump must lift.



MEDIUM DUTY

Medium Duty Column Pipes 150 Mt.

Pipe Series	Outer Diameter	Nominal Diameter		Safe Pump Height	Safe Hydrostatic Pressure	Safe Tensile Load	Breaking Load
	mm	inch	mm	m	kg/cm ² Bar-Atü	kg	kg
medium	42	1 1/4"	32	150	15	940	1600
	48	1 1/2"	40	150	15	1150	1950
	60	2"	50	150	15	1500	2850
	75	2 1/2"	65	150	15	1950	4300
	88	3"	80	150	15	3000	6100
	113	4"	100	150	15	5350	9800
	140	5"	125	150	15	7650	14500
	165	6"	150	150	15	11000	19000

The sizing information for the Medium series column pipes is comprehensively detailed in the table below to ensure proper selection according to system requirements.

U-PVC STANDARD DUTY COLUMN PIPES (UP TO 200M)

Hasspipe U-PVC Standard Duty column pipes are specifically engineered for pumping systems that require higher reliability in medium to deep well installations. Designed for depths up to 200 meters, these standard duty pump column pipes offer a professional-grade solution for demanding groundwater extraction projects.

Enhanced Strength for Deep Well Pumping Applications

Our Standard Duty series is developed for applications where operating depths and pump loads exceed the limits of lighter models. With reinforced wall riser pipes, Hasspipe ensures stable pump operation even under the increased hydrostatic pressure found at 200-meter depths.

Key Advantages of the 200m Series:

- **Increased Mechanical Strength:**
Engineered to handle the weight of larger submersible pumps and deeper water columns.
- **Corrosion & Scale Resistance:**
Eliminates the risks of rust and scaling associated with steel, ensuring clean water and reliable performance in deeper wells.
- **Precision-Machined Threads:**
Features secure, leak-free trapezoidal joints that provide accurate alignment and easy installation.
- **High-Quality Material:**
Manufactured from specialized U-PVC under ISO 9001 quality management, guaranteeing a long service life.

The Reliable Industry Standard for Professional Extraction

Whether for industrial or large-scale agricultural use, Hasspipe enhanced strength column pipes provide the durability required for long-term pumping stability. When your project demands more than a basic solution, our U-PVC standard duty pumping pipes deliver the consistent quality needed for wells up to 200 meters.

When calculating pressure, what matters is not the depth at which the pipe is installed in the well, but the total manometric height the pump must lift.



STANDARD DUTY

Standard Duty Column Pipes 200 Mt.

Pipe Series	Outer Diameter	Nominal Diameter		Safe Pump Height	Safe Hydrostatic Pressure	Safe Tensile Load	Breaking Load
	mm	inch	mm	m	kg/cm ² Bar-Atü	kg	kg
standard	42	1 1/4"	32	200	20	1410	2400
	48	1 1/2"	40	200	20	1650	2800
	60	2"	50	200	20	2250	3800
	75	2 1/2"	65	200	20	2900	5850
	88	3"	80	200	20	4300	7450
	113	4"	100	200	20	7100	12000
	140	5"	125	200	20	10300	18500
	165	6"	150	200	20	19500	33000

The sizing information for the Standard Duty series column pipes is comprehensively detailed in the table below to ensure proper selection according to system requirements.

U-PVC HEAVY DUTY COLUMN PIPES (UP TO 270M)

Hasspipe U-PVC Heavy Duty column pipes are specifically engineered for the most demanding deep well applications. Designed for depths up to 270 meters, these pipes provide the maximum tensile strength required to support heavy submersible pumps and handle high-pressure water columns in industrial-scale extraction.

Maximum Durability for High-Load Pumping Systems

When your project exceeds standard limits, our heavy duty pump column pipes offer the ultimate safety and operational stability. With a significantly reinforced wall structure, these pipes are built to withstand extreme mechanical stress and tensile forces encountered in 270m deep well pipes.

Why Choose the Heavy Duty 270m Series?

- **Ultimate Tensile Strength:**
Engineered to support the combined weight of the water column and high-capacity submersible pumps.
- **High-Pressure Performance:**
Specialized high-pressure riser pipes that maintain integrity under constant deep-well operation.
- **Corrosion-Free Performance:**
100% resistant to rust and aggressive groundwater, ensuring a long service life even in harsh chemical environments.
- **Secure Threaded Connections:**
Precision-machined joints ensure a leak-proof system and perfect vertical alignment, crucial for deep well safety.

The Professional Choice for Industrial and Deep Well Drilling

Manufactured under rigorous ISO 9001 standards, Hasspipe high strength PVC column pipes are the industry benchmark for reliability. For large-scale industrial projects and high-load pumping systems, our Heavy Duty series provides the peace of mind and technical excellence required for the world's deepest groundwater challenges.

When calculating pressure, what matters is not the depth at which the pipe is installed in the well, but the total manometric height the pump must lift.



HEAVY DUTY

Heavy Duty Column Pipes 270 Mt.

Pipe Series	Outer Diameter	Nominal Diameter		Safe Pump Height	Safe Hydrostatic Pressure	Safe Tensile Load	Breaking Load
	mm	inch	mm	m	kg/cm ² Bar-Atü	kg	kg
heavy	42	1 1/4"	32	270	27	1700	2900
	48	1 1/2"	40	270	27	2300	3900
	60	2"	50	270	27	2850	4800
	75	2 1/2"	65	270	27	4200	7100
	88	3"	80	270	27	5850	9900
	113	4"	100	270	27	9700	16500
	140	5"	125	270	27	14100	24000
	165	6"	150	270	27	24100	41000

The sizing information for the Heavy Duty series column pipes is comprehensively detailed in the table below to ensure proper selection according to system requirements.

COLUMN PIPE FITTINGS

BOTTOM & TOP STAINLESS STEEL ADAPTERS

Bottom & Top Stainless Steel Adapters are designed to provide secure, leak-proof, and durable connections at the lower and upper interface points of column pipe and well systems. Their stainless steel construction ensures high resistance to corrosion and pressure, making them ideal for drilling and groundwater applications.



Diameter	
mm	inch
42	1 1/4"
48	1 1/2"
60	2"
75	2 1/2"
88	3"
113	4"
140	5"
165	6"

ADAPTERS

BOTTOM & TOP GALVANIZED STEEL ADAPTERS

Bottom & Top Galvanized Steel Adapters are designed to provide secure, leak-proof, and robust connections at the lower and upper interface points of column pipe and well systems. The galvanized steel construction offers enhanced resistance to corrosion and environmental conditions, ensuring long-lasting and cost-effective performance.



Diameter	
mm	inch
42	1 1/4"
48	1 1/2"
60	2"
75	2 1/2"
88	3"
113	4"
140	5"
165	6"

COLUMN PIPE TRAP (PIPE HOLDING TOOL)

The Column Pipe Trap is a professional-grade tool designed to securely hold, stabilize and support column pipes during installation and removal in well and drilling applications. Its robust steel construction provides a firm grip, enhancing operational safety and efficiency on site.



Outer Diameter	
mm	inch
42	1 1/4"
48	1 1/2"
60	2"
75	2 1/2"
88	3"
113	4"
140	5"
165	6"

TIRE TIGHTENING WRENCH

The Tire Tightening Wrench is a practical tool designed for the safe gripping and tightening of PVC column pipes in well and drilling applications. Its strap design provides strong, non-damaging grip the pipe surface. It improves work safety and installation efficiency during assembly and disassembly operations.



Outer Diameter Range	
mm	inch
42 - 165	1 1/4" - 6 1/4"

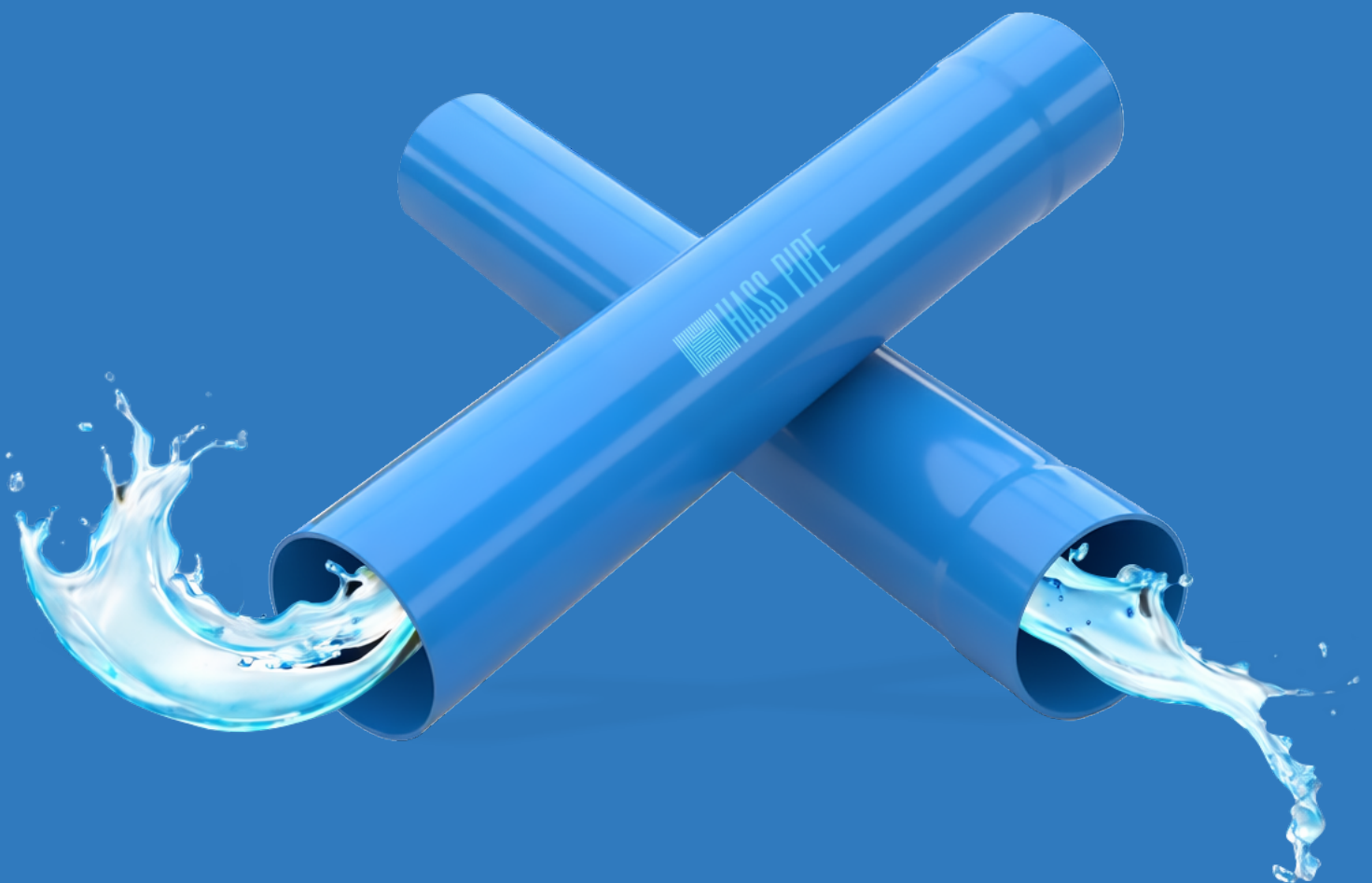
MANEUVERING HEAD

The Maneuvering Head is a durable accessory designed for safe lifting and guiding of pipes during drilling and well casing operations. Its swivel mechanism allows the pipe to rotate freely, reducing torsional stress during installation. Compatible with PVC column pipes and drilling pipes, it improves installation efficiency and supports safe operation in deep well applications.



Outer Diameter	
mm	inch
42	1 1/4"
48	1 1/2"
60	2"
75	2 1/2"
88	3"
113	4"
140	5"
165	6"

U-PVC
SOLVENT
CEMENT
SOCKETED
PIPE



U-PVC SOLVENT CEMENT SOCKETED PIPES FOR PERMANENT WELL CASING

Hasspipe U-PVC solvent cement socketed pipes are engineered to deliver reliable, leak-proof, and long-lasting performance in professional groundwater and well casing applications. Designed for projects where a rigid and permanent joint is required, these pipes offer the ultimate sealing performance through high-quality chemical bonding.

High-Integrity Solvent Weld Systems for Groundwater

Our PVC socketed casing pipes are widely preferred for water well projects that demand high mechanical integrity. Thanks to their bell end PVC casing pipes structure and specialized solvent cement bonding method, they create a continuous, unified pipe string that is virtually immune to leaks.

Key Technical Advantages:

- Permanent Leak-Proof Joints:

The solvent weld borehole pipes method creates a molecular bond between sections, ensuring a maintenance-free and secure system.

- Corrosion & Chemical Resistance:

Manufactured from premium raw materials, these non-threaded PVC well pipes are resistant to aggressive groundwater environments.

- Efficient Flow Dynamics:

The smooth inner surface minimizes friction losses, providing superior hydraulic performance throughout the system's life.

- Rapid Installation:

Their lightweight structure combined with the fast-curing solvent cement process allows for efficient onsite deployment.



The pipe dimensions suitable for U-PVC solvent cement socketed casing pipe applications are listed in the table below.

Pipe Diameter		Thickness
mm	inch	mm
Ø125	4 1/2"	2,5
Ø140	5"	2,8
Ø160	6"	3,2
Ø200	7"	3,8
Ø225	8"	4,2
Ø250	9"	4,8
Ø280	10"	5,3

For pipe diameters and wall thicknesses not listed in the table, please contact us. Custom diameters and thicknesses can be manufactured upon request.

HASS PIPE

www.hasspipe.com



A COMPANY OF

HASS
INTERNATIONAL

info@hasspipe.com

+90 332 410 15 45 | +90 552 880 77 54

HEAD OFFICE	FACTORY
Niřantař Mahallesi Kemerli Caddesi No:20A	Fevzi akmak 42030
Seluklu - Konya/Trkiye	Karatay - Konya/Trkiye